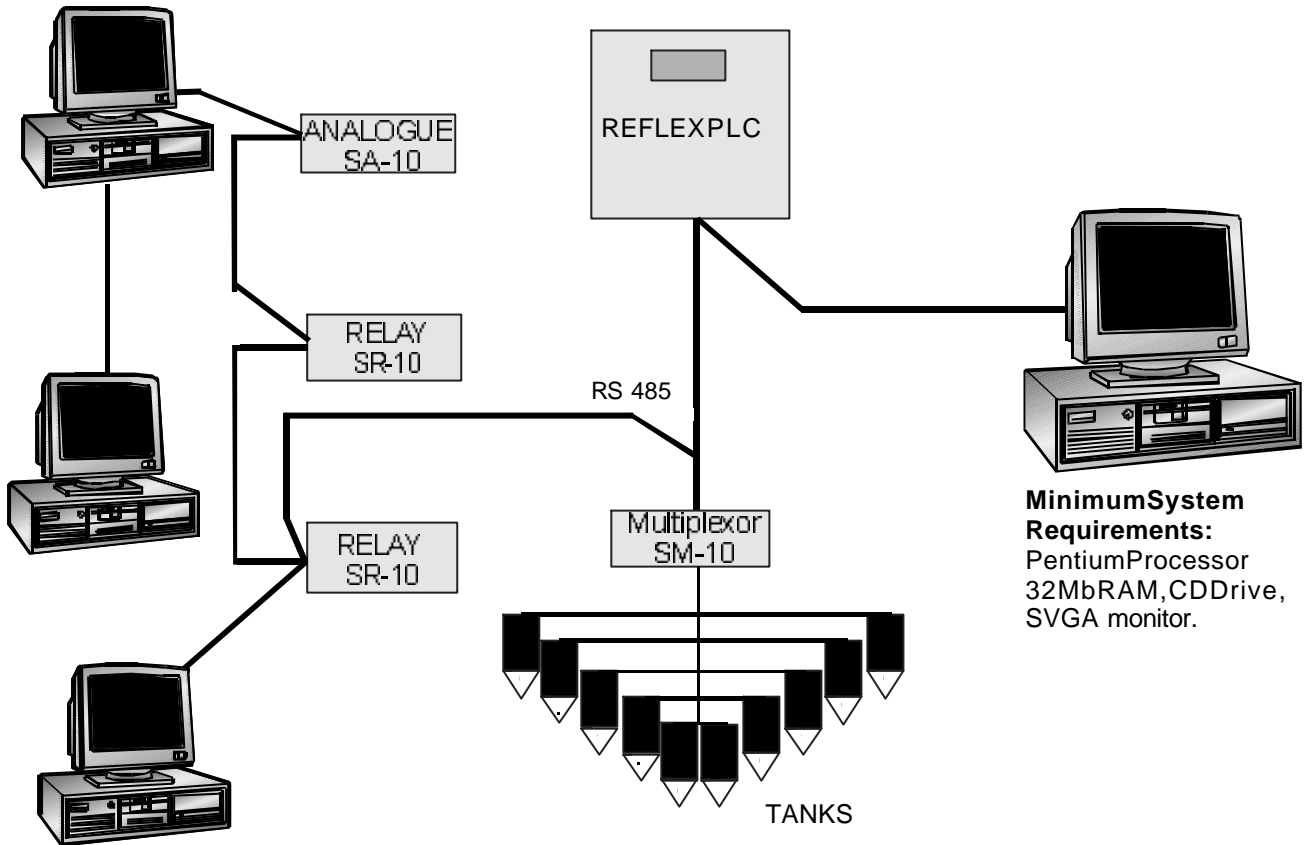


## Tank Monitor



**Minimum System Requirements:**  
Pentium Processor  
32Mb RAM, CDDrive,  
SVGA monitor.

**Total flexibility, to view your tank or silo contents where you need to and at the same time, minimise cabling and installation costs**



**FAX 01527 60046 FOR FURTHER INFORMATION**

Name: \_\_\_\_\_

Company: \_\_\_\_\_

Address: \_\_\_\_\_

Tel No: \_\_\_\_\_ Fax No: \_\_\_\_\_

**HYCONTROL LTD. ORCHARD STREET, REDDITCH, WORCESTERSHIRE. B987DP**

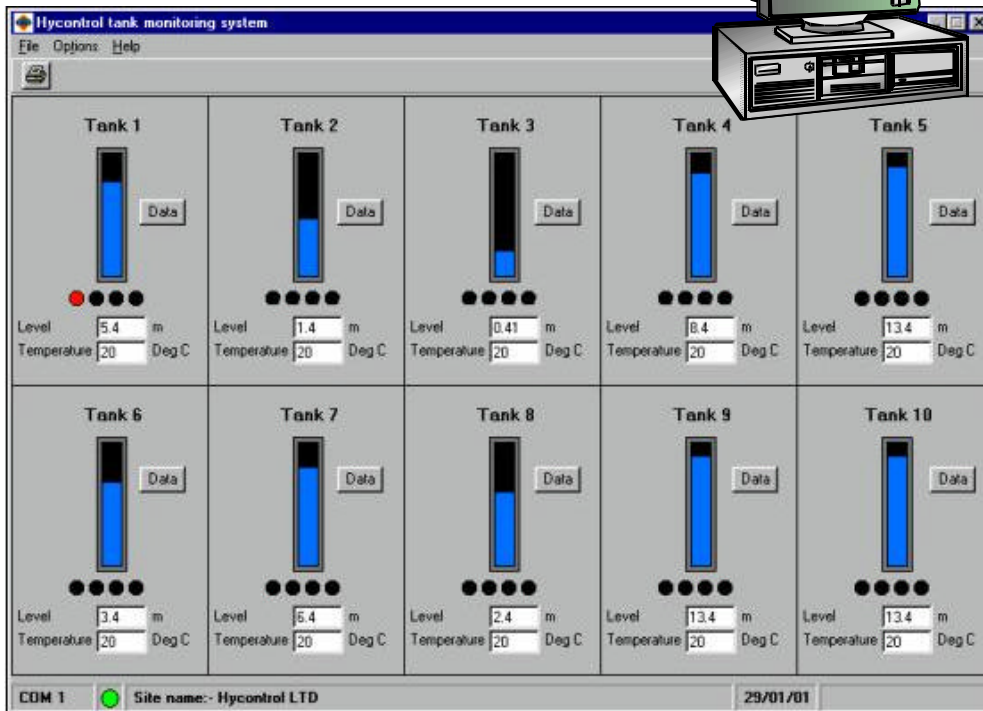
**TEL: +44 (0)1527 67841. FAX: +44(0)1527 60046**

**EMAIL: [sales@hycontrol.com](mailto:sales@hycontrol.com) WEBSITE: [www.hycontrol.com](http://www.hycontrol.com)**

## Tank Monitor

With **Tank Monitor** you can simply and easily display upto 10 levels, in a bargraph format, on your PC screen. A single, screened twisted pair, connects your Reflex Scanning System to your PC's serialport.

When you run **Tank Monitor** it automatically detects the instrument connected and configures the display for you, leaving you to simply edit the names and colours to meet your site requirements.



**Runs in  
Windows® 95 & 98**

**Provides upto 10 virtual  
bargraphs on your PC  
screen.**

**Allows you to display a  
single tank view in full  
screen.**

**Print function allows a  
snapshot of inventory at  
anytime.**

**Up to 30 PC's can be  
connected depending on  
scheme.**

- Connects via an adapter to your computer's serialport.
- Connects to any Reflex PLC or scanning module; SM-10, SR-10 or SA-10
- Once connected, your PC will automatically detect instrument set up and initiate communication.
- User configurable colour scheme
- Internal vessel temperature available on display, if optional sensors used.
- Four relay status indicators per measurement point.
- Tank Monitor can be connected to existing Reflex PLC scanning systems.
- Allows continuous monitoring of an individual tank.



